



RACIAL EQUITY STATEMENT

(Adopted by the Leadership Council of Marin Promise Partnership April 2019)

Racial equity for students in Marin will be achieved when race and ethnicity no longer predict the outcome of a young person's educational future.

As a Marin Promise Partner, our organization commits to identify and dismantle racial inequities, and to provide equity-based supports, so that our most vulnerable children can achieve their full potential.

We, the Leadership Council of Marin Promise Partnership, have come together in partnership to make a public commitment to educational equity. We have synthesized our individual definitions of equity into the above, education-focused, shared statement and invite you to partner with us in sharing it with others.

Working Together for Educational Equity

WE PROMISE TO CLOSE ALL EDUCATIONAL EQUITY

Cradle to Career Educational Progress Report By Race

RACIAL OPPORTUNITY GAP

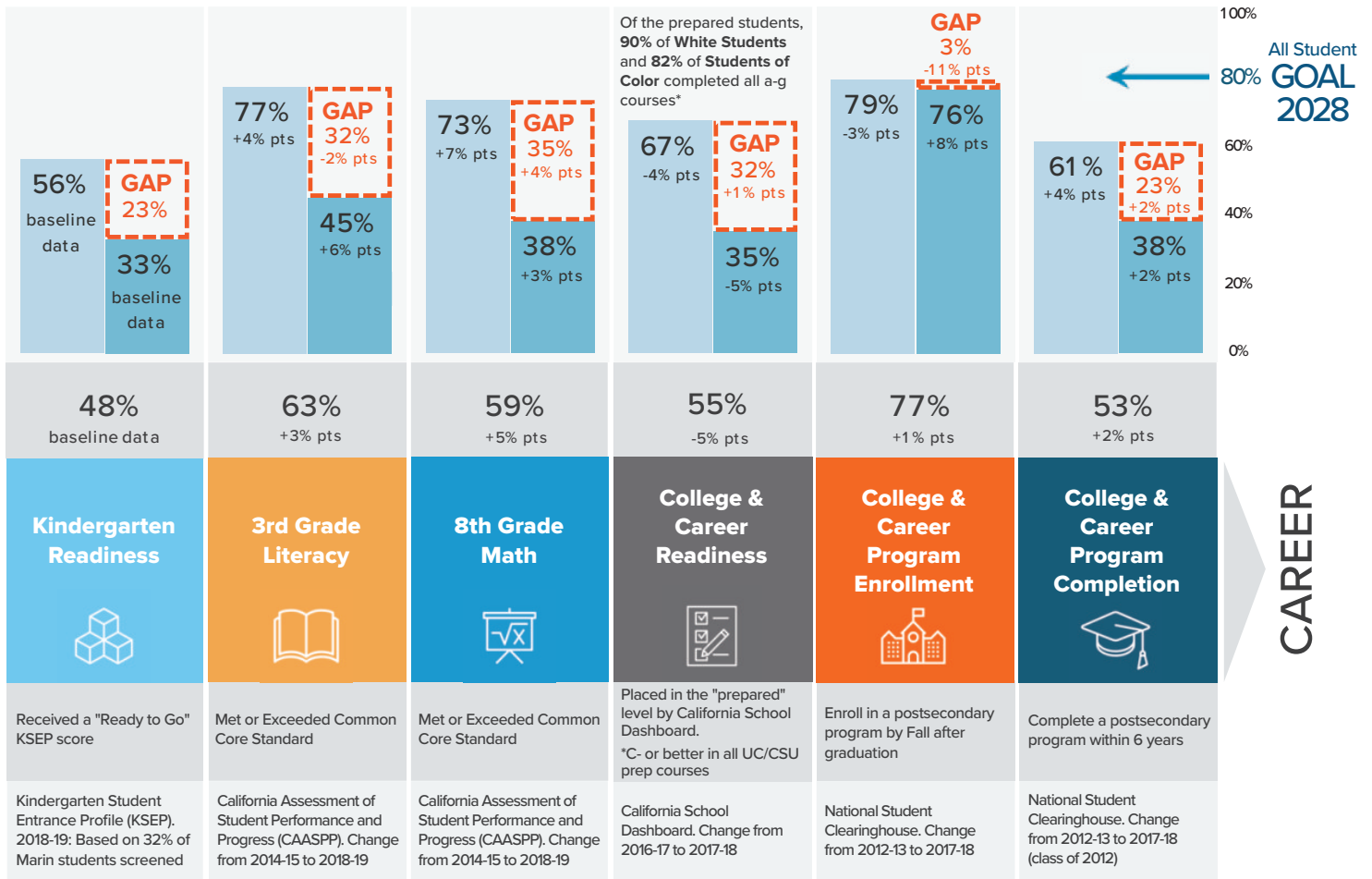
Students Meeting Milestones:

Students of Color ■
White Students ■

All Students meeting milestones

CRADLE

CAREER



Updated Oct 2019

➔ Please visit our website to view live searchable data that can be customized and disaggregated by ethnicity, income, language, district/school, and year.

ITY GAPS, FROM CRADLE TO CAREER, BY 2028.



January 1, 2020

Dear Reader,

Marin is ranked one of the wealthiest, healthiest, best educated counties in California. Yet, systemic inequities in schools and communities continue to limit what's possible for many children of color and youth living in poverty; resulting in some of the greatest disparities in the state.

This persistent educational inequity is unacceptable. Marin Promise Partners refuse to settle for a world where a child's potential is dictated by the conditions into which they were born.

Our Partnership was formed so that every child, regardless of race, ethnicity, or family income, can reach their full educational potential. Only by working together can we ensure that all children, from cradle to career, will meet the educational milestones critical to achieving a bright and successful future.

We are holding each other accountable to our promise by publishing our Cradle to Career Educational Progress Report and Racial Equity Statement, working together to become more culturally responsive, sharing data, collaborating on Action Teams, and implementing equitable systemic change within and between our organizations. Please join us in making educational equity a reality in Marin by 2028.

David Wain-Coon, Co-Chair of the Executive Committee
On behalf of Marin Promise Partnership's Leadership Council

Executive Committee of the Leadership Council

10,000 Degrees Kim Mazzuca, President

Bridge the Gap College Prep Laura Cox, Executive Director

Canal Alliance Omar Carrera, Executive Director

College of Marin David Wain-Coon, President

Community Action Marin Chandra Alexandre, CEO

County of Marin Lorenzo Cordova, District Aide

E3: Education, Excellence, Equity JuanCarlos Arauz, Executive Director

Marin County Office of Education Raquel Rose, Assistant Superintendent

Marin County Free Library Sara Jones, Director of County Library Services

Larry Rosenberger Fair Isaac, Retired CEO

San Rafael City Schools Jim Hogeboom, Superintendent

Tamalpais Union High School District Tara Taupier, Superintendent

The Partnership

More than 100 schools, community members, nonprofits, businesses, and government agencies have come together as a cross-sector, Cradle to Career Partnership to address Marin county's persistent and systemic educational inequities. Together, partners are breaking down barriers, building relationships, changing systems, and improving lives.

The Process

With support from Backbone Staff and a proven collective impact framework, Partners are aligning around a common vision, using data to hold each other accountable, taking collective action, and advocating for equitable, systemic change.



Marin Promise Partnership is an integrated network of people, organizations and systems. Together we can accomplish what none can do alone: sustainable, equitable, systems change, now and for future generations. Join us in making educational equity a reality for all students:

- Follow our progress by signing up to receive our email updates: info@marinpromisepartnership.org
- Post the Partnership's Racial Equity Statement on your website (download a copy at www.marinpromisepartnership.org)
- Make a financial donation to educational equity by funding the Partnership or one of the partnering organizations



The Leadership Council, represented above, provides strategic guidance, operational governance and policy direction as well as publicly champions the collective work of the more than 100 partner organizations.

For a complete list of partners please visit: www.marinpromisepartnership.org/posts/partnership-roster/